

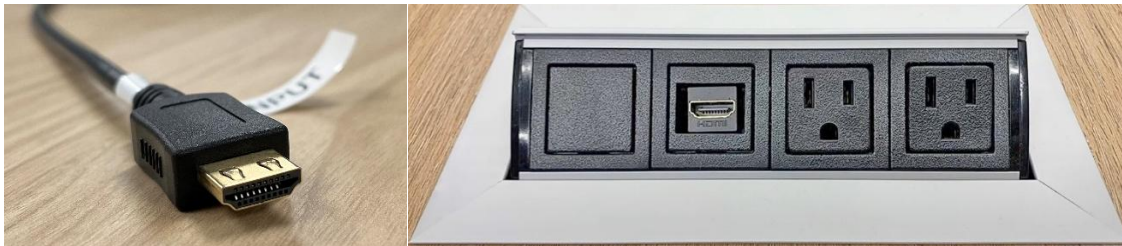


Digital Evidence Presentation System

USER GUIDE

The court provides an HDMI interface for attorneys to connect their personal electronic devices to the court AV system in order to present digital evidence.

HDMI PRESENTATION



To show evidence from your own device, please inform the judge and the court clerk as they control what evidence is published to the courtroom monitors.

HDMI inputs are available at attorneys' tables for transmitting media from electronic devices such as Windows laptops, MacBooks, tablets, and smartphones to the courtroom monitors.

To use the HDMI interface, your device must support HDMI. If your device doesn't have an HDMI output, please bring your own HDMI adapters.

To use your external device to display on the courtroom monitors, **plug in your device to the HDMI interface. Use an adapter if necessary.**

AUDIO ADAPTER SETTINGS

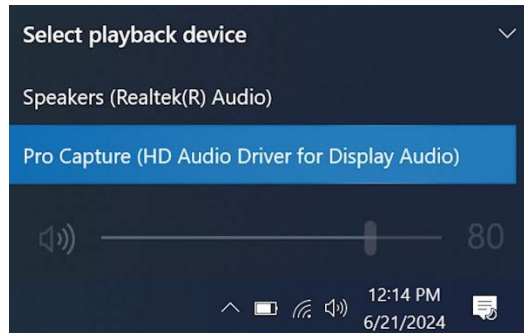
When playing videos or audio recordings, please ensure that the courtroom sound adapter is detected by your device.

Windows PC


1. Click on the "Speaker icon"  located at the lower right-hand corner.

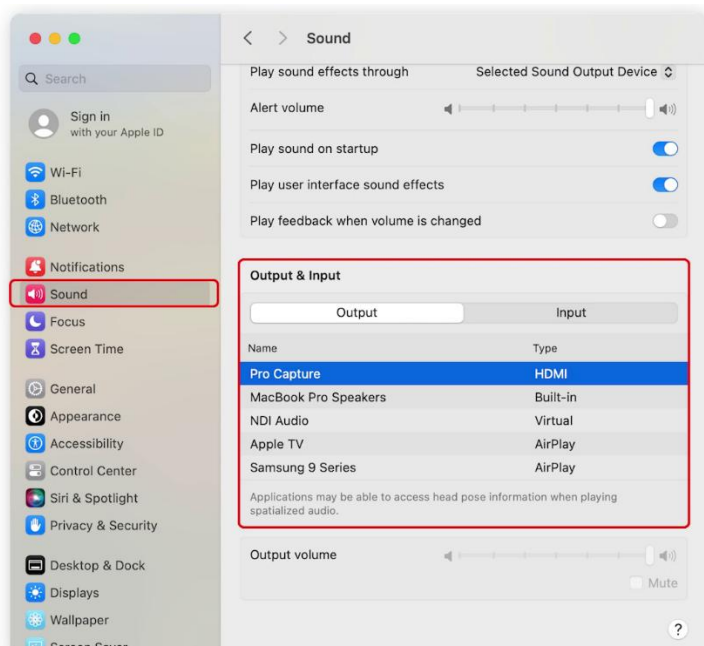


2. Select the courtroom sound adapter.



MacOS

1. Click on the **Apple menu**  at the top left of the screen, select “**System Settings**”.
2. Open “**Sound**” setting.
3. In “**Output & Input**” setting, under Output setting, select the courtroom audio adapter.



It is a best practice to run a test with the court prior to the trial date to ensure that all evidence displays properly, and, if applicable, audio quality is acceptable. Please contact the court to arrange a date.

Please note that the use of USB flash drives or DVDs to display evidence on a court PC is discouraged due to security and privacy concerns. It's preferred to connect your personal device(s) to the court AV system.



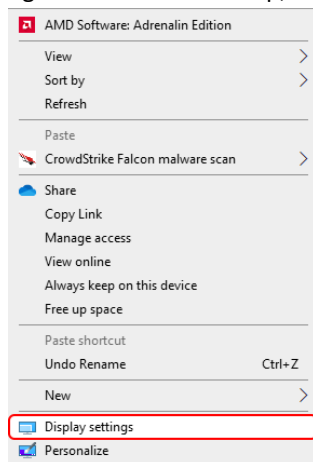
EXTEND DISPLAY (OPTIONAL)

When connecting to the EPS with your own device, the display setting is typically automatically set to **"Duplicate desktop"**, so that everything shown on your device's screen is also shown on the courtroom monitors.

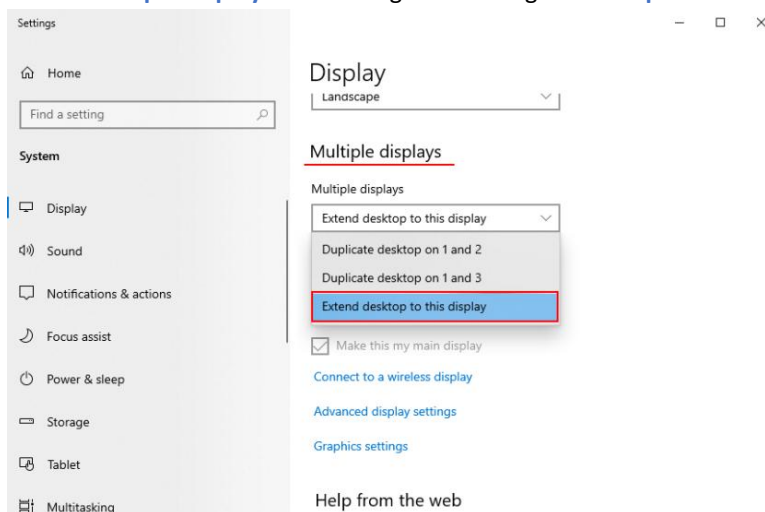
You may change this setting to **"Extend desktop"** so that your device screen acts as the primary screen that is only visible to you and the courtroom displays behave as the secondary screen for privacy purposes.

Windows PC

1. Right click on the desktop, then select the **"Display settings"** option.



2. Scroll down to **"Multiple displays"** and change the setting from **"Duplicate"** to **"Extend this Display"**.



MacOS

1. Click on the **Apple** menu at the top left of the screen, select **"System Settings"**.
2. Open **"Displays"** setting.



3. In the “Use as” setting, click on the displays, and set your device as the main display, and courtroom display as extended display.
4. You can arrange the position of the displays by clicking on “Arrange...”.

