



New York State  
Unified Court System



Division of Court  
Modernization

# TEC-1 & EX-UBT Device User Guide

Feb 11, 2026



## Introduction

The Division of Court Modernization has installed TEC-1 and EX-UBT devices as the courtroom's dedicated audio controller that allows court staff to easily control room audio inputs, outputs and volume levels.



## TEC-1 Controller

Use the touch dial to select an option, then tap the center of the dial to your selection.



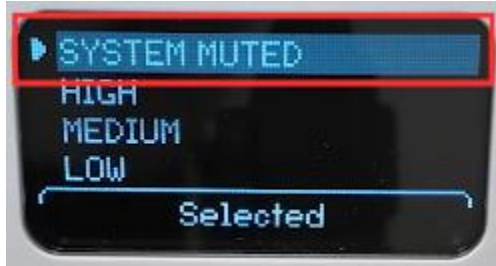


## TEC-1 Features

---

### System Mute

The System Mute feature mutes all speakers in the courtroom. This will not affect the FTR recording, as it works independently from the room audio.



### System Volume

There are 3 preset levels of volume that could be set:



- High
- Medium
- Low

These presets provide quick and easy volume adjustments with a single tap.

The TEC-1 settings may vary in different courtrooms. Some TEC-1 devices provide volume control slider instead of presets. Tap the center of the dial to bring up the volume slider. Use the touch dial to adjust the slider on a scale of 1 to 100, then tap again to confirm.






## Bluetooth

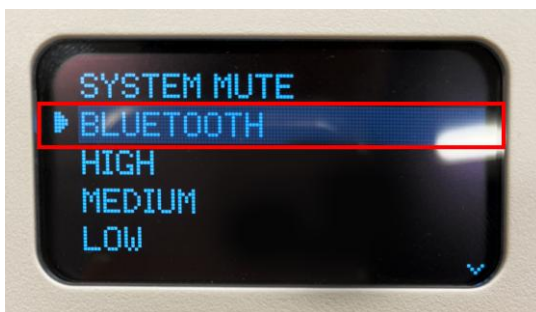
To enable Bluetooth connectivity, selecting “Bluetooth” activates the Biamp EX-UBT device.

The EX-UBT is a compact, remote expander device that allows attorneys or authorized presenters to quickly connect directly to the court’s audio system. Whether using USB or Bluetooth, you get flexibility and seamless compatibility—putting you in control.

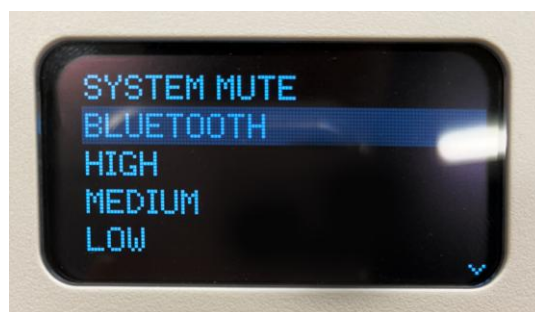
In order to use this feature, you must pair the device.



Bluetooth is **enabled** when the caret  is visible on the control interface and **disabled** when the icon is not visible.



Bluetooth enabled



Bluetooth disabled

- o **Important:** Bluetooth should be disabled when not actively in use. Leaving Bluetooth enabled may allow unauthorized devices to connect to the courtroom



sound system and broadcast audio through the courtroom speakers. Disabling Bluetooth when not needed helps maintain system security and prevents unintended audio playback.

- Only **ONE** Bluetooth device can be paired with the sound system at a time.

## Pair Device with TEC-1 via Bluetooth

### iPhone

With the TEC-1 Bluetooth enabled, go to **Settings**  > **Bluetooth**  and enable.

Your phone will be able discover devices that are available for pairing.

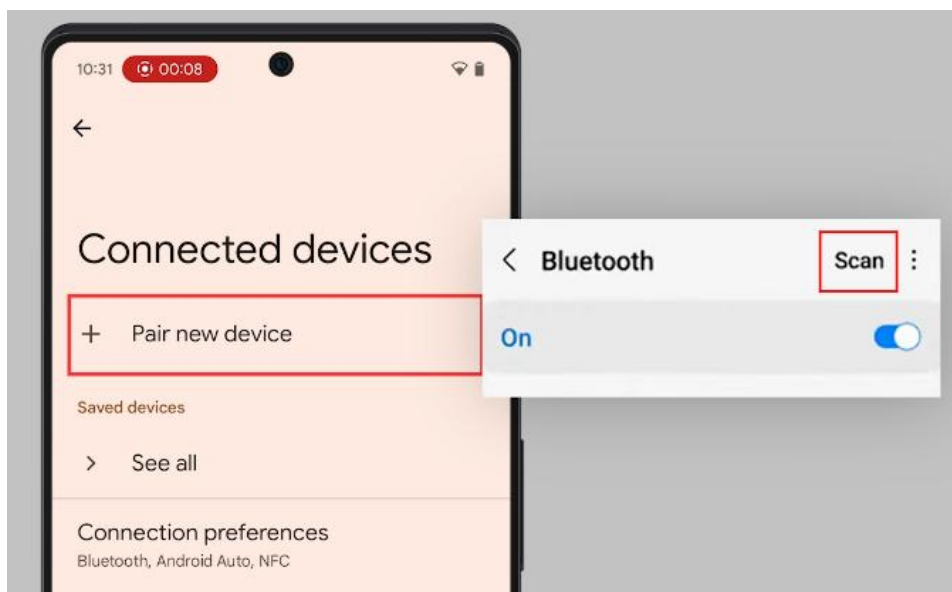
The Bluetooth device name is intuitive and aligned with the courtroom location: location name and the courtroom name/number. (E.g. NYC C/ROOM 100)

Upon successful pairing, the device will indicate it is “Connected”.

### Android




Go to **Settings**  > Enable **Bluetooth**  > **Pair new device**

*On certain Android phone, you may need to hit the “Scan” button to engage pairing.*

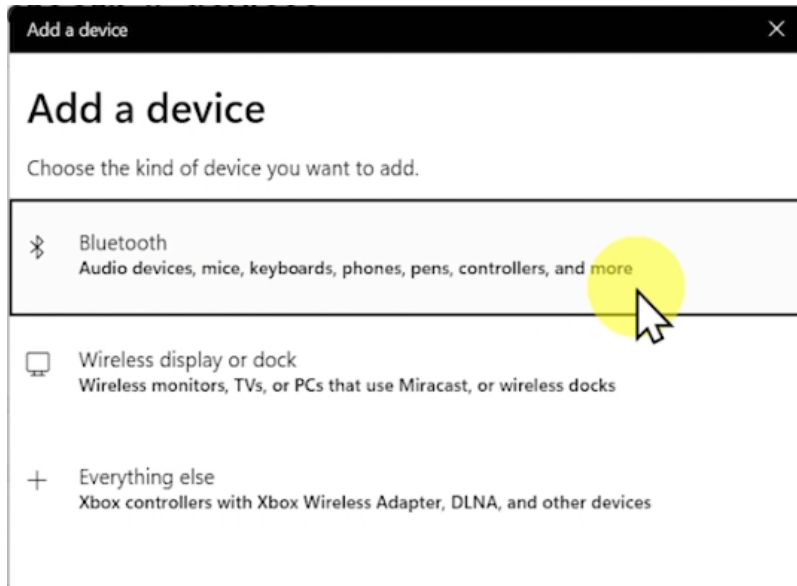




## Windows Laptop

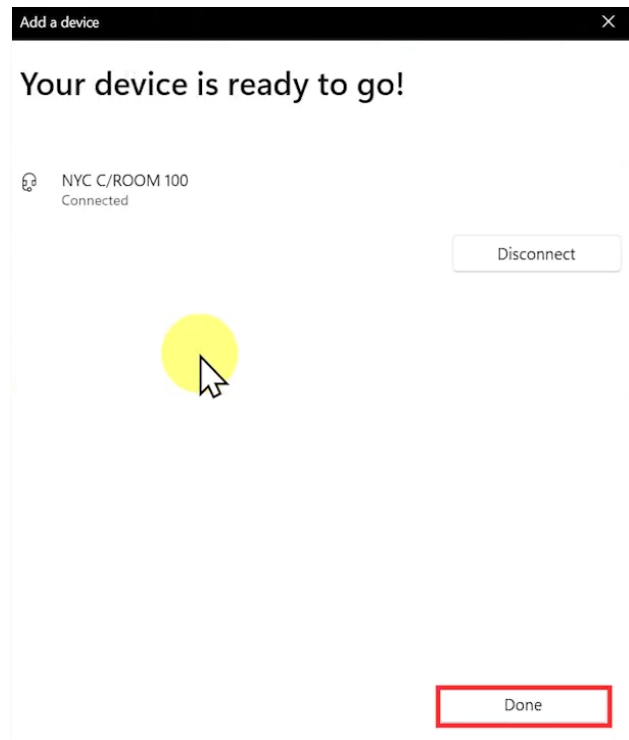
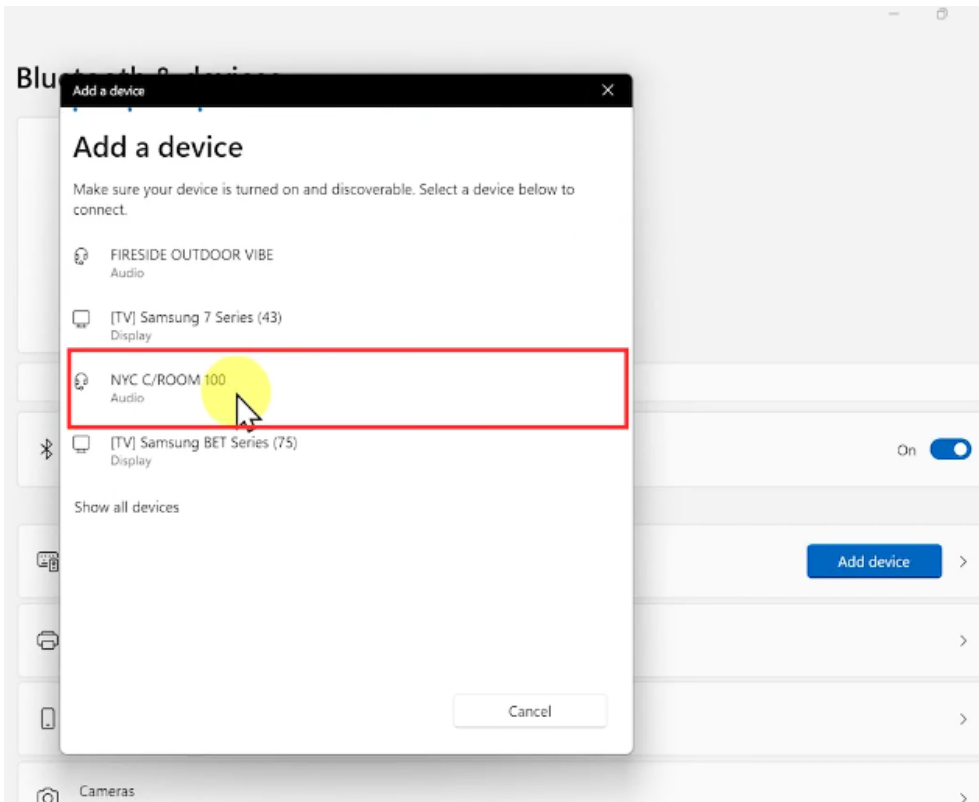
Open the **Windows Start Menu**  > **Settings**  > **Bluetooth & devices** 

Enable Bluetooth, then select **add a Bluetooth device**.






Select the audio device labeled with the corresponding courtroom name to pair the TEC-1 device, then select **Done**.

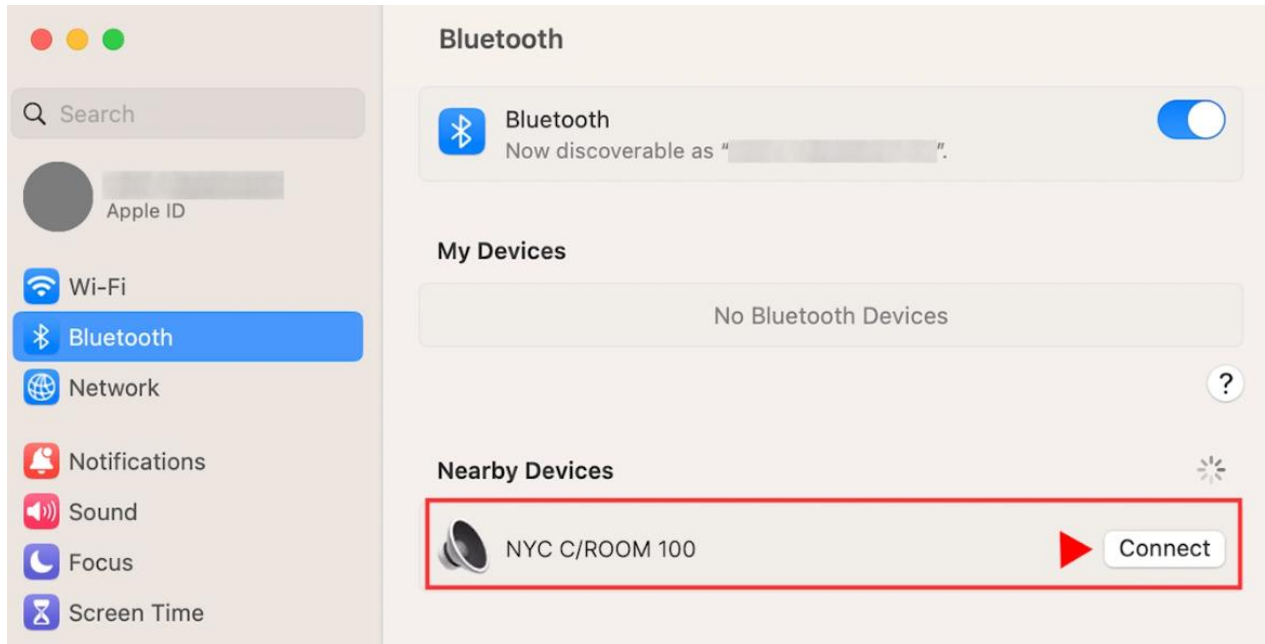




## MacBook

Open the **Apple Menu**  > **System Settings** or **System Preferences** > **Bluetooth**  and enable

Once the TEC-1 device appears under Nearby Devices, select it to connect.



When you're done using the interface, simply select the Bluetooth option again on the TEC-1 to turn off Bluetooth.

## Additional TEC-1 Options

You may find additional options on the TEC-1 display which may vary to reflect the needs of each respective courtroom.

## Resource and Support

To learn about DCM and view training resources, please visit:

<https://ww2.nycourts.gov/dcm/support.html>

If you have questions or require additional assistance, please contact DCM Service DCM-Services@nycourts.gov.